

2-PC Full Port Ball Valve Flange End



DIRECT MOUNTING PAD

V2FH-150LBS SIZE: 1/2" ~ 4"

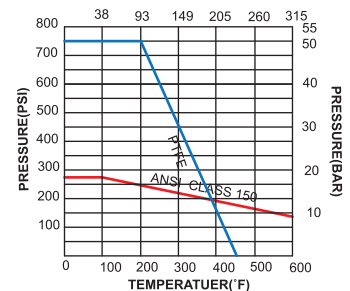
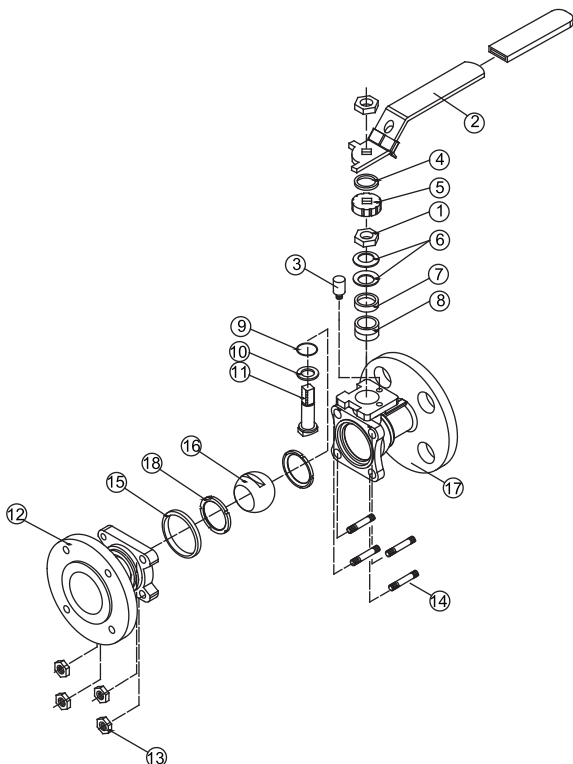
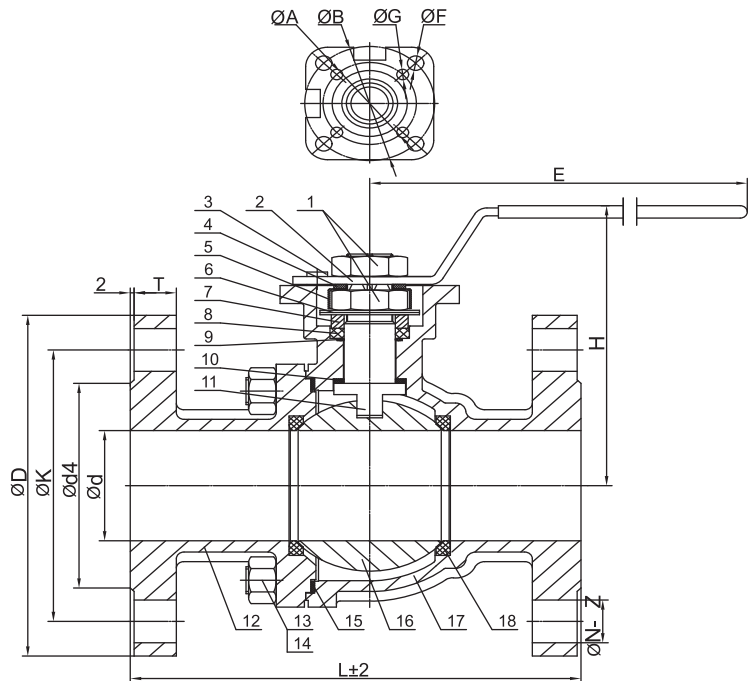


STAINLESS STEEL
 AISI-316 (DIN 1.4408) (ASTM-A351-CF8M)
 AISI-304 (DIN 1.4308) (ASTM-A351-CF8)
 CARBON STEEL
 S-45C (DIN 1.0619) (ASTM-A216-WCB)

- FEATURES:**
- *Flange: ANSI B16.5 Class 150
 - *Face to face: ANSI B16.10
 - *Pressure rating: 150LBS
 - *Investment casting body and cap
 - *Blow-out proof stem
 - *ISO 5211 direct mounting pad

MATERIALS LIST

ITEM	PART	QTY	MATERIALS		
			304	316	WCB
1	Nut	2	304	316	304
2	Handle	1	201	201	201
3	Stop Screw	1	304	316	304
4	Square Washer	1	304	316	304
5	Stop-lock-cap	1	304	316	304
6	Belleville Washer	2	304	316	304
7	Bushing	1	304	316	304
8	Packing	2	PTFE	PTFE	PTFE
9	O-Ring	1	NBR	NBR	NBR
10	Thrust Washer	1	PTFE	PTFE	PTFE
11	Stem	1	304	316	304
12	Cap	1	CF8	CF8M	WCB
13	Nut	1/2"-2"x4pcs	304	316	304
14	Bolt	2-1/2"x6pcs	304	316	304
15	Gasket	1	PTFE	PTFE	PTFE
16	Ball	1	304	316	304
17	Body	1	CF8	CF8M	WCB
18	Seat	2	PTRE /RPTFE	PTRE /RPTFE	PTRE /RPTFE



DIMENSIONS

NOMINAL SIZE	INCH	MM	d	d4	K	D	N-Z	T	L	H	E	A	B	G	F	Kg	TORQUE	UNIT: mm
																		kgf-cm
1/2"	15	15	34.9	60.3	90	4-16	8.5	108	72	125	36	42	6	6	1.85	4.5		
3/4"	20	20	42.9	69.9	100	4-16	11	117	87	125	36	42	6	6	2.23	7.0		
1"	25	25	50.8	79.4	110	4-16	13	127	92	150	42	50	6	7	3.6	8.5		
1-1/4"	32	32	63.5	88.9	116	4-16	14	140	105	150	42	50	6	7	4.55	14.5		
1-1/2"	40	38	73	98.4	126	4-16	15	165	120	195	50	70	7	9	6.22	21		
2"	50	49	92.1	120.7	151	4-19	16	178	127	195	50	70	7	9	8.5	28		
2-1/2"	65	65	104.8	139.7	176	4-19	19	190	135	260	70	102	10	12	12.05	51		
3"	80	74	127	152.4	187	4-19	21	203	157	300	70	102	10	12	15.85	86		
4"	100	98	157.2	190.5	228	8-19	22	229	173	300	70	102	10	12	23.8	121		